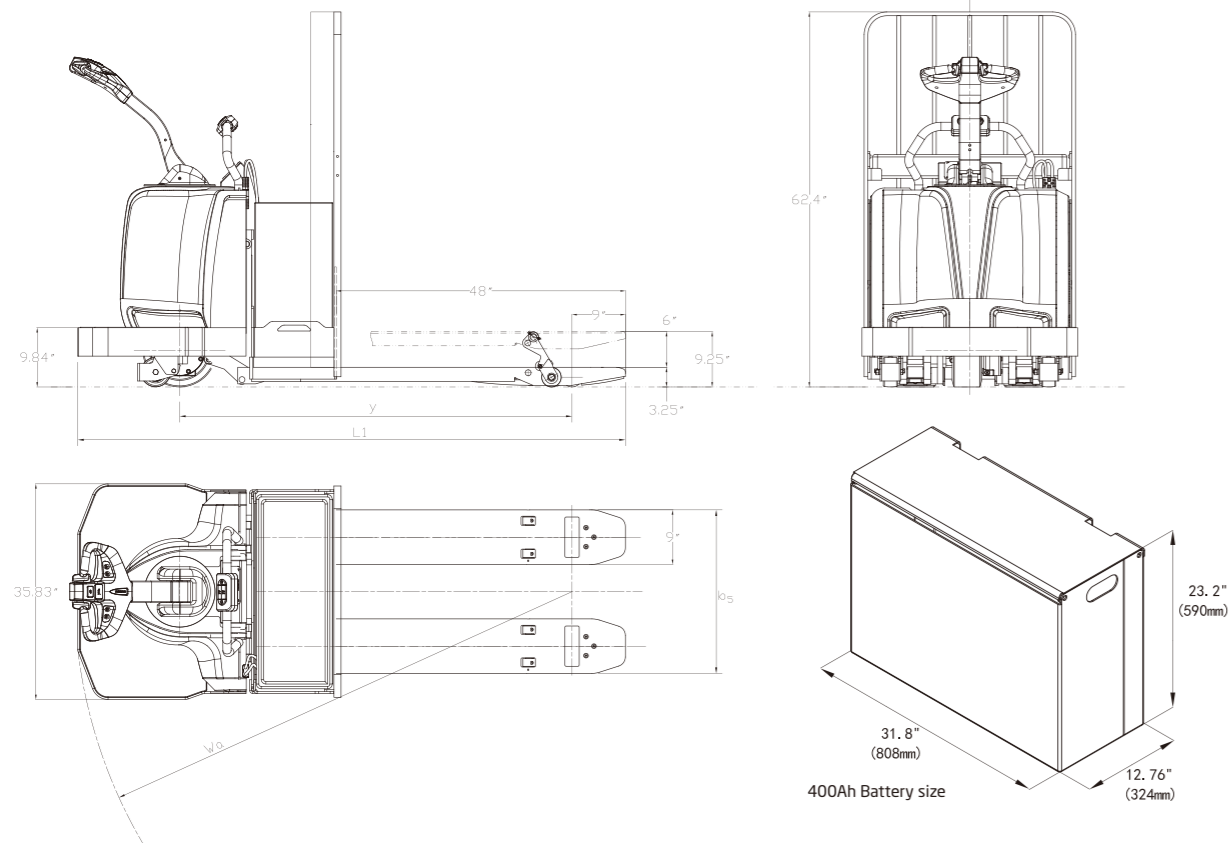


A Series End Control Rider Pallet Truck

Distinguishing mark	HANGCHA GROUP CO.,LTD.				
	1.1	Manufacturer	ECR27	ECR36	
1.2	Manufacturer's type designation	CBD27-AC15-NA	CBD36-AC15-NA		
1.3	Drive: electric (battery or mains), diesel, petrol, fuel gas	Electric	Electric		
1.4	Operator type	Rider	Rider		
1.5	Rated capacity/rated load	Q(lb)	6000	8000	
1.6	Load centre distance	c(in)	24	24	
1.8	Load distance, centre of drive axle to fork	x(in)	39.1	39.1	
1.9	Wheelbase	y(in)	65.2	65.2	
Weight	2.1	Service weight	lb	2090	2200
Tyres, chassis	3.1	Tyres: solid rubber, superelastic, pneumatic, polyurethane	Polyurethane	Polyurethane	
	3.2	Tyre size, front	12.2×4.3	12.2×4.3	
	3.3	Tyre size, rear	in	2-3.25×6.5	2-3.25×6.5
	3.4	Additional wheel (dimensions)	in	2-5×2.4	2-5×2.4
Dimensions	4.4	Lift	h ₃ (in)	6	6
	4.15	Fork height, lowered	h ₁₃ (in)	3.25	3.25
	4.19	Overall length	l ₁ (in)	91	91
	4.20	Head length	l ₂ (in)	43	43
	4.21	Overall width	b ₁ (in)	36	36
	4.25	Distance between fork-arms	b ₅ (in)	27.1	27.1
	4.35	Turning radius	W _a (in)	82.7	82.7
Performance Data	5.1	Travel speed, laden/unladen	mph	5.6/8.7	5.6/8.7
	5.8	Max Gradeability, laden/unladen	%	8/15	8/15
	5.10	Service brake		Electromagnetic	Electromagnetic
Electric engine	6.4	Battery voltage, nominal capacity K5	V/Ah	24V/300Ah	24V/400Ah
	9.1	Manufacturer		Curtis	Curtis

Model	V		ECR27	ECR36
Voltage	V		24	24
Battery Compartment	"X" Max.	mm (in)	810(31.9)	810(31.9)
	"Y" Max.	mm (in)	327(12.9)	327(12.9)
	"Z" Max.	mm (in)	593(23.3)	593(23.3)
Batt.Wt.	Maximum	Kg (lb)	866(1910)	866(1910)
	Minimum	Kg (lb)	310(685)	310(685)



HC FORKLIFT AMERICA CORPORATION

Company address:
10405-A Granite Street Charlotte,
NC 28273

Toll Free: 888-652-8395
Phone: 980-888-8335
Fax: 980-888-8336

america@hcforklift.com
www.hcforkliftamerica.com



2021 VERSION 1/COPYRIGHT 2021/03

HANGCHA GROUP CO., LTD. reserves the right to make any changes without notice concerning colors, equipment, or specifications detailed in this brochure, or to discontinue individual models. The colors of trucks, delivered may differ slightly from those in brochures.



A Series End Control Rider Pallet Truck

with capacities of 6,000/8,000lbs

The World of Hangcha



A Series End Control Rider Pallet Truck

The CBD36-AC1S-NA pallet truck is designed for high-intensity work conditions specially, and is suitable for various handling and picking operations, featuring excellent performance, safety and reliability, and lower maintenance cost for operations.

Simple/
Solid/
Smart



Reliability

- / The design of pallet truck frame of high-strength steel plate can satisfy various work conditions, with long service life.
- / Box-type stamped fork features higher strength and impact resistance, with excellent strength and rigidity.
- / Water-proof plug connectors offer reliable protection for all cables, which increases reliability of the electrical system significantly.
- / The limit switch of lifting motor eliminates overflow of the hydraulic power unit, which is more energy efficient, and can protect the motor of power unit.

Comfort

- / Low-noise reduction gear box and high-elasticity PU traction wheel result in low noise.
- / Additional wheels supported with PU blocks and springs realize more stable travelling.
- / Inner concave design at bottom of machine hood offers larger room for operator's feet.

Appearance

- / Integrated machine hood, smooth lines, full of dynamics, in compliance with environmental requirements.
- / Frame and fork of stamped steel plates, solid and reliable.

Safety

- / Release braking, reverse braking, and three types of emergency braking can ensure safety of traveling.
- / Anti-sliding function on slope can ensure safety of operation.
- / The emergency braking button on top of operating handle can avoid the driver from injury effectively in case of emergency during backward driving of the pallet truck.

High Performance

- / The AC driving motor features excellent acceleration performance, outstanding climbing ability, low heat emission, and is brushless, and maintenance-free.
- / The CANBUS bus structure realizes faster and more reliable communication for the entire machine.
- / The operating handle has a Picking button as standard configuration, so the pallet truck may be operated at the side to increase efficiency of picking operation.
- / Regenerative brake of the pallet truck prevents it from sliding on a slope.

Standard

- / High-efficiency AC driving motor
- / High-performance PU driving wheels
- / CURTIS AC controller
- / High-performance hydraulic power unit
- / Anti-skid pedal pad for standing operation
- / CANBUS multi-functional operating handle
- / Multi-functional interactive instruments
- / PU buffering elastic auxiliary wheels
- / Electromagnetic brake
- / Load backrest

Options

- / Battery capacity: 24V/300/400/750Ah
- / Distance between fork-arms: 28in
- / Fork length: 54/60/84/96/132/144in



The roomy platform features low steps heights to reduce fatigue, and cushioned lean pads (Opt.) allow the operator to adjust stance throughout the shift, enhancing operator comfort.



The load backrest is secured with high-strength bolts, which can protect the operator effectively.



The CURTIS AC control system offers accurate and stable work, and higher efficiency.



FREI tiller